



# **MAGNUM MUD EQUIP. CO.**

**“FIRST IN SERVICE”**



**PORTABLE MUD MIXING PLANTS**

**IMDG STAINLESS TANKS**

**COAST GUARD APPROVED TANKS**

**CARGO TANKS**

**IBC TANKS**

**ACID TANKS**

**WORKOVER  
SYSTEM FLUID TANKS**

**MARINE PORTABLE  
TANKS**

**PREHYDRATION  
TANKS**

**STORAGE TANKS**

**CUTTINGS BOXES**

**D.O.T. SPEC. 57  
TANKS**

**IM-101 TANKS**

**PALLET CARGO  
BOXES**

**OFFSHORE  
TOOL BASKETS**

**CARGO  
CONTAINERS**

**MUD PUMPS  
AND HOSES**

**[www.magnummud.com](http://www.magnummud.com)**

**Jennings, Louisiana**  
1923 Highway 90 West  
Phone: 337 824-8890  
Fax: 337 824-8892  
1-800-200-TANK

**Venice, Louisiana**  
1-800-230-8265

**Morgan City, Louisiana**  
1-800-230-8265

**Fourchon, Louisiana**  
1-800-230-8265

**Cameron, Louisiana**  
1-800-200-8265

**Intracoastal City, Louisiana**  
1-800-200-8265

**Galveston, Texas**  
1-800-200-8265

**CORPORATE OFFICE**  
1961 Highway 182  
Houma, LA 70364

**Phone: 985 872-1755**  
**Fax: 985 872-1786**  
**1-800-230-8265**

***Servicing the Gulf of  
Mexico for 29 Years***



## Commitment to Our Customers

**Magnum Mud Equipment Co., Inc.** has specialized in the tank rental business since its inception in 1981. In our nearly thirty years of business, we have diversified into equipment lines that assist Gulf of Mexico operators by making transportation of products to offshore locations safe and easy. Early on, Magnum Mud Equipment specialized primarily in mixing tanks and pill tanks, but as we identified needs of the industry, we added many equipment lines such as cuttings boxes, various sized baskets, single and double pallet boxes, cargo containers, transporters, 250 and 500 bbl. transport tanks and many other items that aid in offshore logistics. One call is all it takes for the best designed and maintained equipment on the Gulf Coast.

**Certified Equipment:** Due to our vast variety of equipment, we work with several different

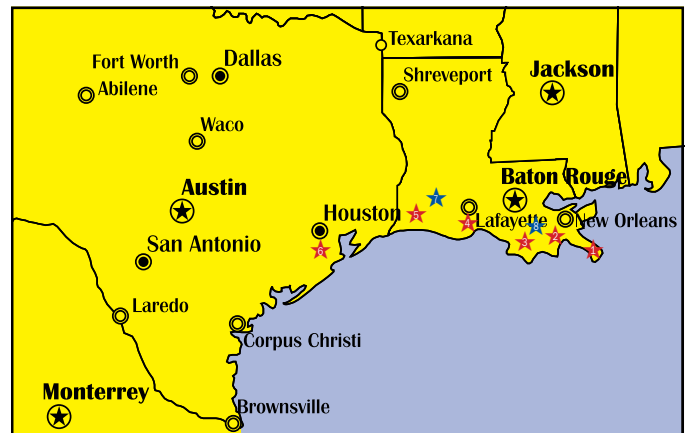
certification agencies to keep our equipment in compliance. The United States Coast Guard, the United States Department of Transportation, ABS Group, and DNV are some of the agencies we work with on a regular basis.

**Maintenance Records:** We have an extensive database that holds all testing dates of our equipment. With all the requirements in place today concerning date sensitive information, we maintain a log showing visual test dates, hydro-test dates, NDT test dates, load test dates, device test dates and so on. Our customers can rest assured that great efforts are taken to insure that equipment renting from Magnum Mud Equipment Co. are in compliance.

**Results:** Equipment and People you can count on. Compliance that keeps customers in a safe and trouble free work environment.

## 8 Locations to Serve You

Magnum Mud Equipment Co. reduces cost and expedites transportation time for our customers by maintaining equipment stock points along the Gulf Coast. In addition to our main locations in Houma, LA and Jennings, LA, we also have equipment staged in six different dockside locations spread from Venice, LA to Galveston, TX.



1. Venice, Louisiana
2. Fourchon, Louisiana
3. Morgan City, Louisiana
4. Intracoastal City, Louisiana
5. Cameron, Louisiana
6. Galveston, Texas
7. Jennings, Louisiana
8. Houma, Louisiana



# Table of Contents

<b><u>D.O.T. and U.S.C.G. Approved Tanks</u></b>		<b><u>Brochure Page #</u></b>
350 gallon	I.B.C. Tote Tank	2
550 gallon	I.B.C. Tote Tank	2
25 bbl.	IMDG Tank	3
15 bbl.	D.O.T. Spec. 57 Tank	9
15 bbl.	I.B.C. Dual Purpose Tank	9
25 bbl.	Cuttings Box	10
25 bbl.	UN Tank	4
25 bbl.	Marine Portable Tank or IM 101 Tank	4
50 bbl.	Marine Portable Tank	Not Shown
100 bbl.	Marine Portable Tank or IM 101 Tank	5
150 bbl.	Marine Portable Tank or IM 101 Tank	6
250 bbl.	Storage or Transport Tank	7
500 bbl.	Storage or Transport Tank	8
<b><u>Mixing Tanks</u></b>		
30 bbl.	Open Top Mx. Blend. Tank w/Hydraulic Agitator	18
50 bbl.	Open Top Mx. Blend. Tank w/Hydraulic Agitator	18
100 bbl.	Open Top Mx. Blend. Tank w/Electric Agitator	19
300 bbl.	Open Top Mx. Blend. Tank w/Electric Agitator	21
500 bbl.	Open Top Mx. Blend. Tank w/Electric Agitator	21
<b><u>Storage Tanks</u></b>		
25 bbl.	Open Top Storage Tank	Not Shown
50 bbl.	Open Top Storage Tank	Not Shown
50 bbl.	Open Top Mx. Tank	Not Shown
100 bbl.	Open Top or L Skid Encl. Storage	19
100 bbl.	Open Top Mx. Tank	19
100 bbl.	Acid Storage Tank	22
150 bbl.	Acid Storage Tank	22
150 bbl.	Open Top Storage Tank	Not Shown
200 bbl.	Open Top Storage Tank	20
210 bbl.	Enclosed L-Skid Storage Tank	22
200 bbl.	Open Top Storage Tank w/Gas Buster	20
300 bbl.	Open Top Storage Tank	Not Shown
500 bbl.	Open Top Storage Tank w/Gas Buster	Not Shown
<b><u>Portable Pumps</u></b>		
2" X 2" Air Diaphragm Pump		23
3" X 3" Air Diaphragm Pump		23
5" X 6" Centrifugal Pump w/371 Diesel Engine Electric Start		24
5" X 6" Centrifugal Pump w/371 Diesel Engine Electric Start and Independent Hydraulic Power Pack		Not Shown
6" X 8" Centrifugal Pump w/471 Diesel Engine Electric Start		24
6" X 8" Centrifugal Pump w/671 Diesel Engine Electric Start		24
<b><u>Logistics Equipment</u></b>		
Magnum Single Pallet-Cargo Box w/ Water Tight Door		11
Magnum Dual Pallet-Cargo Box		11
Side By Side Pallet Box		12
6' x 6' Conex		12
8' x 10' Double Door Cargo Container		13
8' x 20' Double Door Cargo Container		13
4' x 4' Offshore Tool Basket		14
4' x 8' Offshore Tool Basket		14
4' x 12' Offshore Tool Basket		14
4' x 16' Offshore Tool Basket		14
4' x 24' Offshore Tool Basket		14
6' x 12' Offshore Tool Basket		15
6' x 16' Offshore Tool Basket		15
8' X 8' Octagon Hose/Material Basket		15
8' x 16' Offshore Tool Basket		15
8' x 24' Offshore Tool Basket		15
6' x 6' Mini-Transporter		16
8' x 16' Magnum Transporter		16
8' x 24' Magnum Transporter		16
Drum Carrier		17
Bottle Rack		17
Spill Containment Wall		Not Shown
6" 8-Way Manifold System		23

# MAGNUM MUD EQUIPMENT CO., INC.

*“We Are The Tank Rental Professionals”*

## 350 GALLON STAINLESS STEEL TOTE TANK



### FEATURES:

- 10 Gauge Construction
- Base Dimensions: 42" x 48"
- Total Height (approx.): 50"
- Volume (approx.): 350 gallons (1325 liters)
- Empty Weight (approx.): 496 lbs.
- Maximum Gross Weight: 6,016 lbs.
- 22.5" Nominal Diameter Stainless Steel Removable Lid with Eyebrows (for fork deflection) and a 2" Crimp-on Vent Cap
- EPDM Multi-seal Lid Gasket
- Epoxy-coated Manway Clamp Ring
- Standard 1/4" Combination Lifting Lug / Leg Positioner
- 2" Top Bung Fitting with Plug and Buna Gasket
- Sloped Bottom Construction for Virtually Complete Product Drainage
- 2" 316 Stainless Steel Reverse Acting, Lockable Ball Valve with Plastic Shipping Plug and Valve Guard for Forklift Protection
- Plated Steel 5/8" x 4" Bolt and 5/8" Nut
- Safety / Caution Decals
- Stainless Steel UN/Serial Number Plate

## 550 GALLON STAINLESS STEEL TOTE TANK



### FEATURES:

- 10 Gauge Construction
- Base Dimensions: 42" x 48"
- Total Height (approx.): 74"
- Volume (approx.): 550 gallons (2084.50 liters)
- Empty Weight (approx.): 645 lbs.
- Maximum Gross Weight: 9,318 lbs.
- 22.5" Nominal Diameter Stainless Steel Removable Lid with Eyebrows (for fork deflection) and a 2" Crimp-on Vent Cap
- EPDM Multi-seal Lid Gasket
- Epoxy-coated Manway Clamp Ring
- Standard 1/4" Combination Lifting Lug / Leg Positioner
- 2" Top Bung Fitting with Plug and Buna Gasket
- Sloped Bottom Construction for Virtually Complete Product Drainage
- 2" 316 Stainless Steel Reverse Acting, Lockable Ball Valve with Plastic Shipping Plug and Valve Guard for Forklift Protection
- Plated Steel 5/8" x 4" Bolt and 5/8" Nut
- Safety / Caution Decals
- Stainless Steel UN/Serial Number Plate

## 25 BBL. IMDG TANK



**OPTIONAL LEVEL  
INDICATOR GAUGE**



**VALVE ASSEMBLIES**



**WORK AREA**

### **FEATURES:**

- IMDG (T11) - DNV 2.7.1
- Dim - 6'6" L X 6'6" W X 8'6" H
- Empty Weight - 4,190 lbs.
- Max. Gross Weight - 26,000 lbs.
- M.A.W.P. 58 psi
- Internal Valve w/Remote Closure and Fusible Link
- 3/4" Fluid Sample Valve
- Ground Wire Lug
- Air Circulation Line
- Level Indicator DipStick
- Camlock Fittings
- DNV Approved 4-Point Lift
- Grated Work Area
- Fall Arrest Anchor Device

\*\*\* Optional Level Indicator Gauge

Magnum Mud Equipment Co. recognizes the need in our industry for specialized tanks to transport specialized products. Our new 25bbl. Stainless Steel IMDG Tanks offer many benefits for transportation of expensive specialty fluids or hazardous products that require the safety features of IMDG tanks. These tanks have many safety features built into the design such as Internal Valve with both remote closure and fusible link, should a fire occur. The grated work area and fall arrest anchor device work together to supply a safe area for workers when filling or rigging the tank. Lastly, these tanks have no internal liners to worry about. Give us a call so we can answer any questions that may arise concerning our new 25bbl. IMDG Stainless Steel Tanks.



# MAGNUM MUD EQUIPMENT CO., INC.

*"Service With Experience"*

## 25 BBL. UN TANK

### FEATURES:

- 8'6" L X 6' W X 7'2" H
- Empty Weight - 5,500 lbs.
- Max. Gross Weight - 28,000 lbs.
- M.A.W.P. 58 psi
- 3" Internal Valves
- Camlock Fittings
- Epoxy Lining
- 4 - Point Lift
- Forklift Slots
- Fusible Link
- Walkway Grating
- Tank height is less than 6' from the ground, therefore no harness is required.

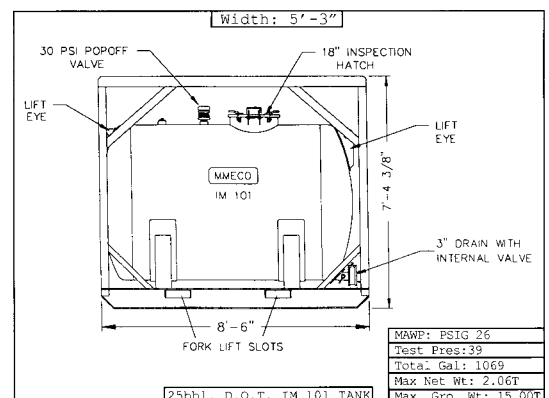


## 25 BARREL D.O.T. CERTIFIED IM 101 TANK



### FEATURES:

- Our new 25 bbl. tank design is rated the highest in the industry at maximum gross weight 30,000 lbs.
- Protective frame around tank allows tanks to be stackable
- Epoxy lined for easier cleaning
- Internal valve & remote closure available for these tanks when needed
- Top of tank has non-skid surface for safety
- Tank height is less than 6' from the ground, therefore no harness is required.



UNITED STATES COAST GUARD & D.O.T. CERTIFIED TANKS



**We have the largest inventory of offshore tanks on the Gulf Coast.**

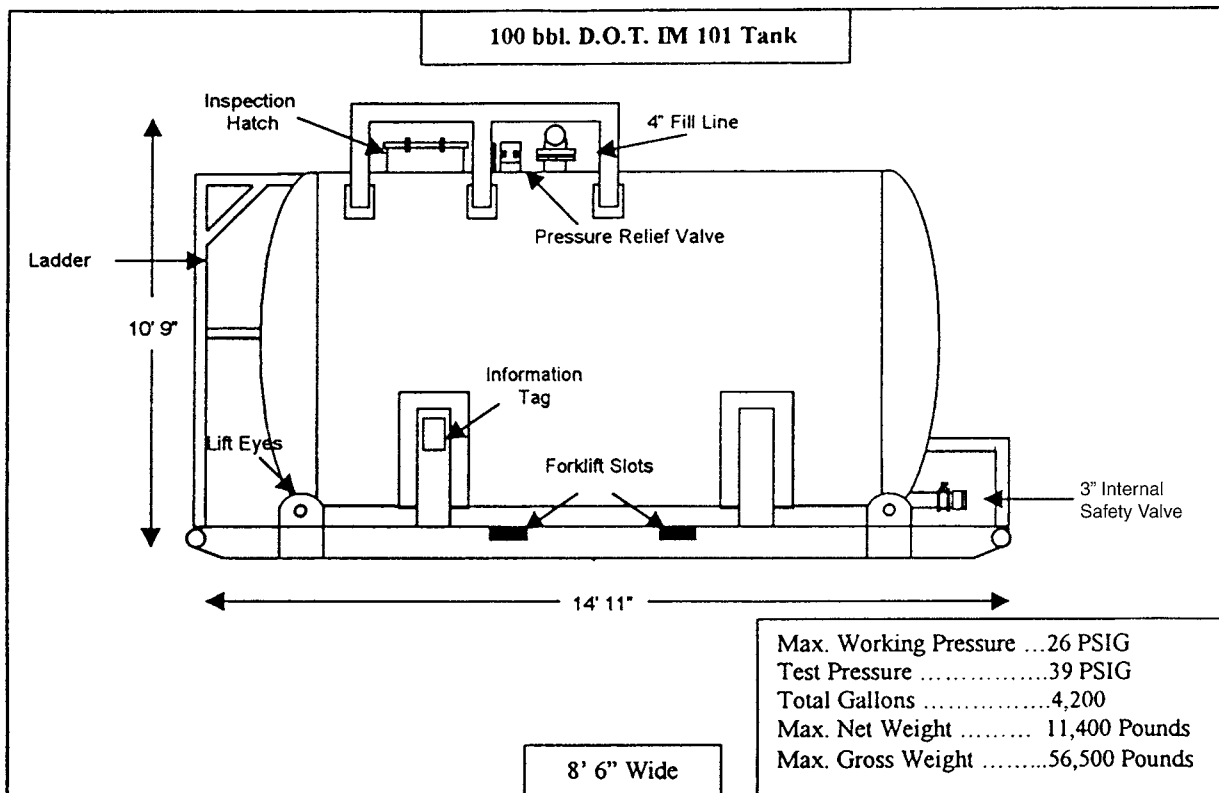
# 100 BARREL D.O.T. CERTIFIED IM 101 TANK



**FEATURES:**

Epoxy Lined for Easier Cleaning  
 Top of Tank Has Non-skid Surface for Safety

**IM 101  
 CERTIFIED**



# MAGNUM MUD EQUIPMENT CO., INC.

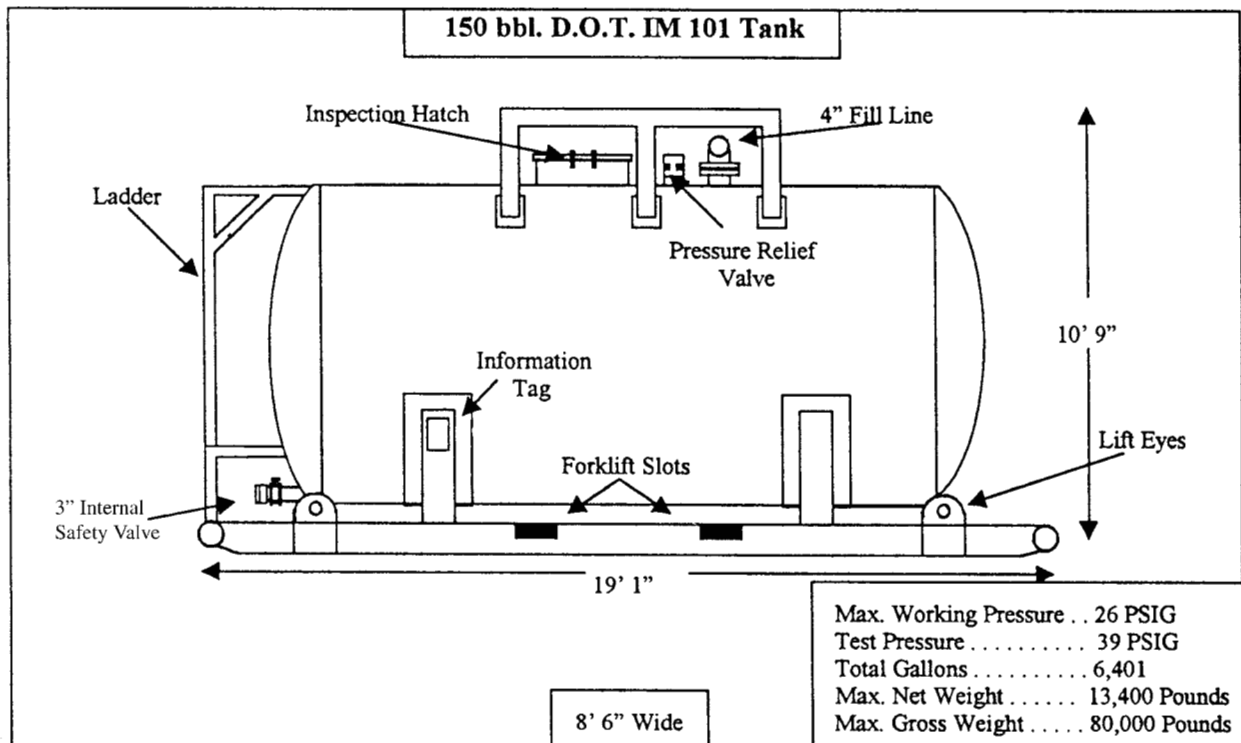
*“Best Design and Strongest Built”*

## 150 BARREL D.O.T. CERTIFIED IM 101 TANK

**FEATURES:**

- Epoxy Lined for Easier Cleaning
- Top of Tank Has Non-skid Surface for Safety

IM 101  
CERTIFIED





## 250 BARREL U.S.C.G. APPROVED INDEPENDENT CARGO TANK WITH CIRCULATING LINE & HAND RAILS



**FEATURES:**

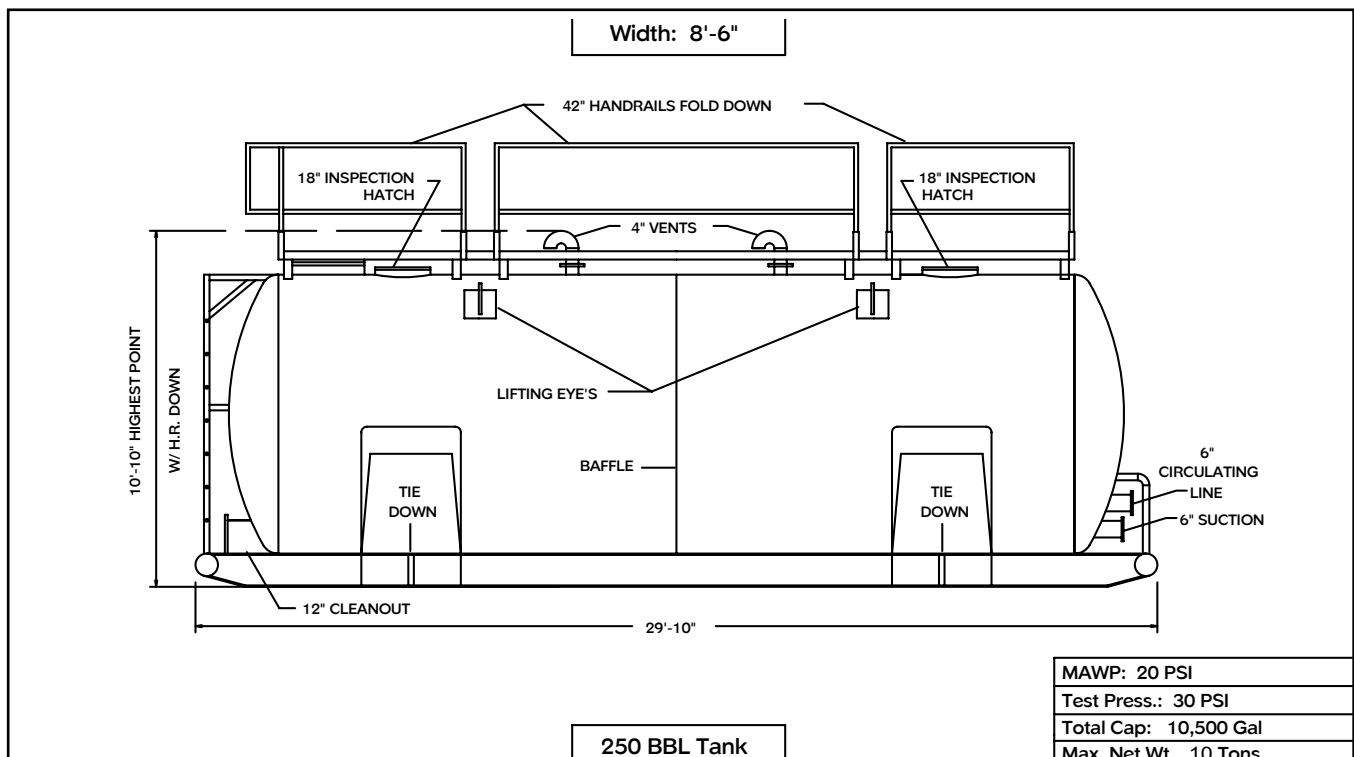
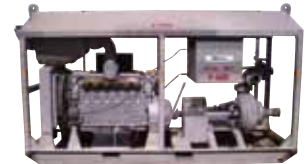
- Suction Line
- Fill Line
- Available with Circulating Line Upon Request

*8-Way Manifold p. 19*

*2", 3" or 4" Hoses*

*Pumps p. 20*

*Also Available:*



# MAGNUM MUD EQUIPMENT CO., INC.

*Quality and Experience*

## 500 BARREL U.S.C.G. APPROVED INDEPENDENT CARGO TANK WITH CIRCULATING LINE & HAND RAILS

**FEATURES:**

- Suction Line
- Fill Line
- Walkway with Handrails
- Available with Circulating Line upon Request

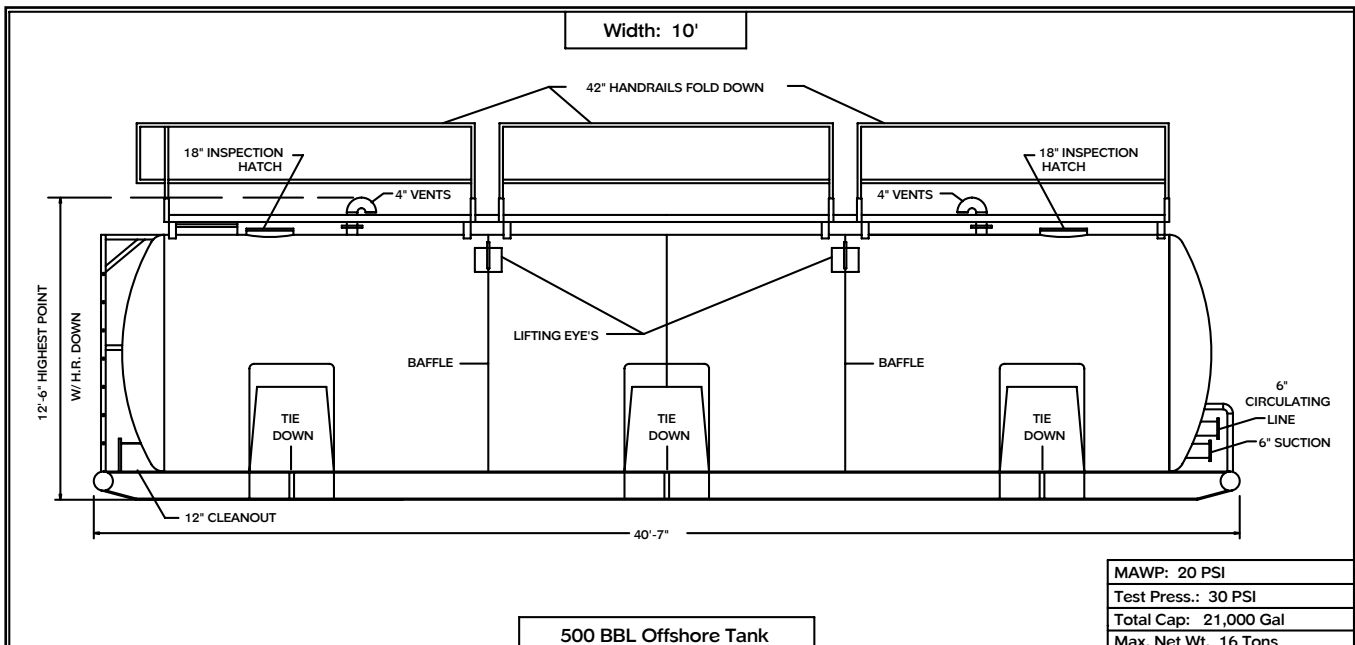
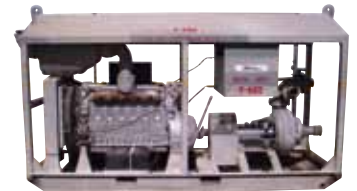
*Also Available:*

*8-Way Manifold  
p. 19*



*2", 3" or 4"  
Hoses*

*Pumps p. 20*



## 15 BARREL D.O.T. SPEC. 57 CUTTINGS BOX



### FEATURES:

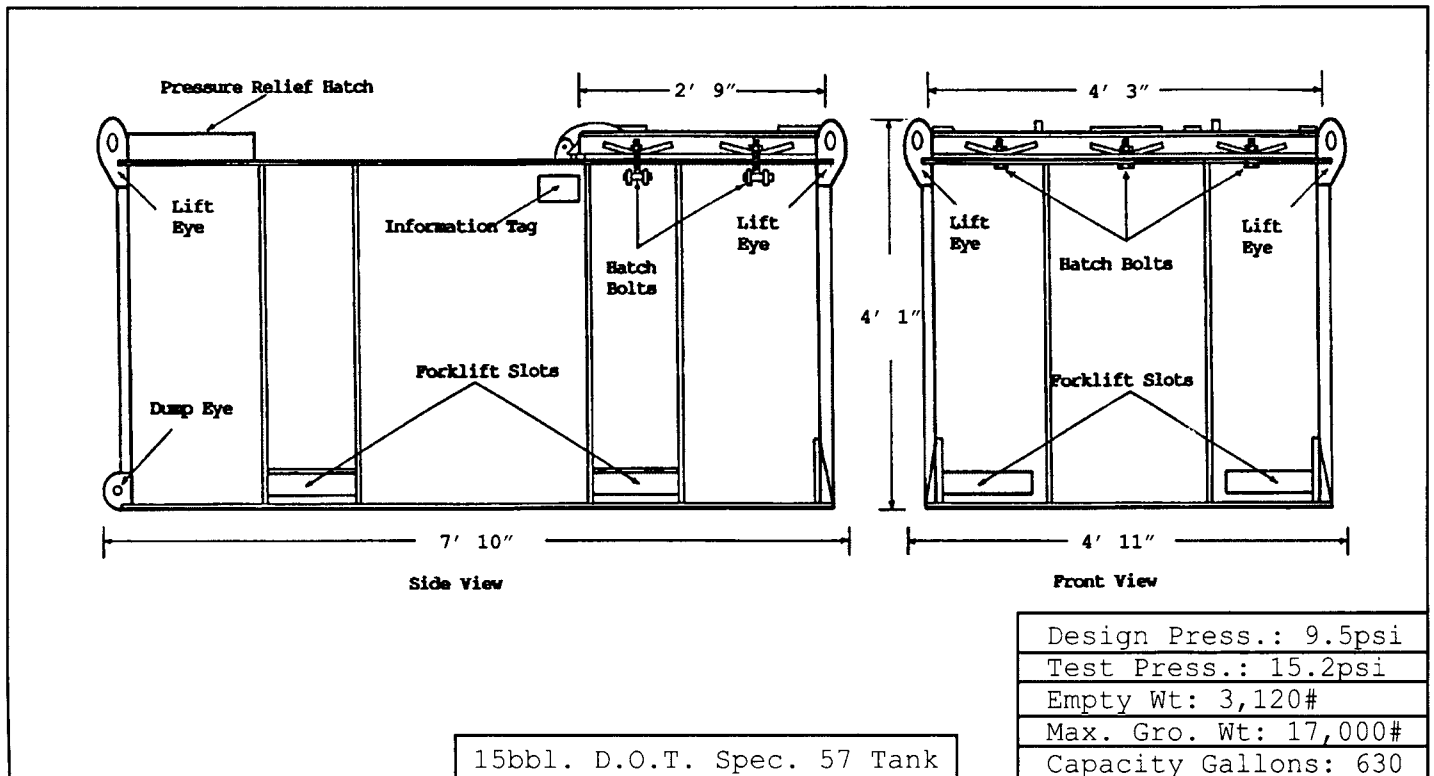
- Low Profile
- Tank Galvanized for Easy Cleaning
- Stackable Design for Saving Space
- Inspection Hatch
- Fork Lifiable on All 4 Sides
- Designed, Manufactured and Tested to Meet or Exceed D.O.T. Requirements

### TANK USED FOR:

- Transporting Materials Offshore
- Transporting Materials on Highways

### APPROVED FOR TRANSPORTING:

- Norm Waste
- Oil Base Drill Cutting
- Many Other Industrial Hazardous Wastes



# MAGNUM MUD EQUIPMENT CO., INC.

*"Equipment That Meets Clean Gulf Oil Spill Response Requirements"*

## 25 BARREL D.O.T. NON SPEC. CUTTINGS BOX

### FEATURES:

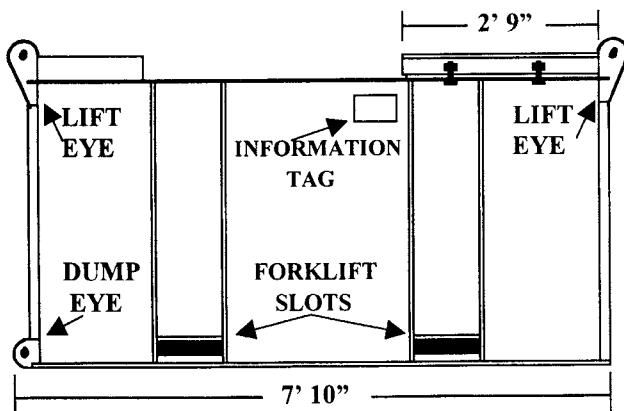
- Low Profile
- Tank Galvanized for Easy Cleaning
- Stackable Design for Saving Space
- Inspection Hatch
- Fork Lifiable on All 4 Sides
- Designed, Manufactured and Tested to Meet or Exceed D.O.T. Requirements

### TANK USED FOR:

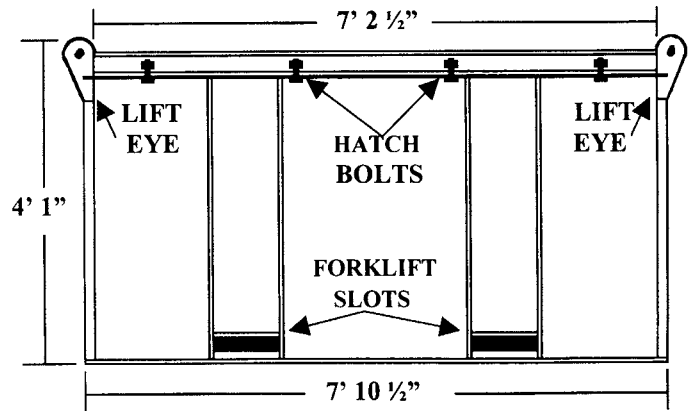
- Transporting Materials Offshore
- Transporting Materials on Highways

### APPROVED FOR TRANSPORTING:

- Norm Waste
- Oil Base Drill Cutting
- Many Other Industrial Hazardous Waste:



SIDE VIEW



FRONT VIEW

Design Press.: 10.12lbsg
Test Press.: 15.2lbsg
Empty Wt.: 4,560#
Max. Gro. Wt.: 26,500#
Capacity Gallons: 1,050



**“We Can Handle All Your Cargo Container Needs”**

## **PALLET/CARGO BOX**

**DIMENSIONS 6'9”H x 5'8”W x 5'11”D • APPROX. WEIGHT 3,000 lbs.**



### **FEATURES:**

- Maximum Gross Weight: 10,000 lbs.
- Designed with 2.5 to 1 Safety Factor
- Engineered Padeyes
- Waterproof Door
- 2 Lockable Door Latches with Grease Fittings
- Internal Door Latches
- 2-4” Forklift Slots
- Stackable Design (Empty Only)
- Internal Cargo Tie Down Rings
- Drilled Padeyes
- Waterproof Vent
- Galvanized Coating
- 4 Leg Sling

*Also available for food or battery service*

## **DUAL PALLET/CARGO BOX**

**DIMENSIONS 10'2”H x 5'4”W x 5'8”D • APPROX. WEIGHT 4,300 lbs.**



### **FEATURES:**

- Maximum Gross Weight: 17,200 lbs.
- Designed with 2.5 to 1 Safety Factor
- Engineered Padeyes
- Large Easy Open Door
- Lockable Door Latch
- Internal Door Latch
- 2-4” Forklift Slots
- Internal Cargo Tie Down Rings
- External Tie Downs to Secure Box During Transportation
- Drilled Pad Eyes
- Galvanized Coating
- Removable Shelf
- 4 - Leg Sling with Stinger

### **Common Uses:**

- Transport, contain, and lift pallet material
- Transport, contain, and lift bulk sack material
- Transport miscellaneous items such as office equipment and computers

# MAGNUM MUD EQUIPMENT CO., INC.

*“Service With Experience”*

## SIDE BY SIDE PALLET BOX

**DIMENSIONS: 6'9" H x 10'10" W x 5'8 D**  
**EMPTY WEIGHT: 6,000 lbs. • APPROX. WEIGHT: 6,000 lbs.**

### **FEATURES:**

- Maximum Gross Weight: 22,000 lbs.
- Stackable Design with 2 Independent Locking Doors
- Waterproof Doors
- 2 - 4" Forklift Slots
- Internal Cargo Tie Downs
- Drilled Padeyes
- Waterproof Vent
- Galvanized Coating
- Engineered Padeyes



## 6X6 CONEX

**DIMENSIONS 6'2" L x 6'7" W x 6'9" H APPROX. WEIGHT 1,510 lbs.**

### **FEATURES:**

- Maximum Gross Weight: 6,610 lbs.
- Stackable Design (Empty Only)
- CSC
- Lockable Door
- Wood Flooring
- Tie Down Loops
- 2 Vents
- Forklift Slots
- Engineered Padeyes
- Waterproof Doors





# Large and Small Cargo Containers

## CARGO CONTAINER

**DIMENSIONS 9'9" L x 9'W x 8'6" H    APPROX. WEIGHT 2,550 lbs.**



**FEATURES:**

- Maximum Gross Weight: 14,000 lbs.
- CSC Safety Approval
- Lockable Door Latches
- Wood Flooring
- 4 Interior Tie-Down Loops
- 2 Vents on Each Side
- Forklift Slots
- Engineered Padeyes
- Stackable Design (Empty Only)

**Common Uses:**

- Transport and store miscellaneous cargo (i.e.: furniture, office supplies, pallet material)
- Store and secure cargo at the dock

## CARGO CONTAINER

**DIMENSIONS 19'11" L x 8'6" W x 8' H    APPROX. WEIGHT 4,800 lbs.**

**FEATURES:**

- Maximum Gross Weight: 28,000 lbs.
- CSC Safety Approval
- Waterproof Doors
- Lockable Door Latches
- Wood Flooring
- 20 Interior Tie-Down Loops
- 1 Vent on Each Side
- Forklift Slots
- Engineered Pad Eyes
- Stackable Design (Empty Only)

**Common Uses:**

- Transport and store miscellaneous cargo (i.e.: furniture, office supplies, pallet material)
- Store and secure cargo at the dock



# MAGNUM MUD EQUIPMENT CO., INC.

## Baskets of All Sizes



4' x 4'  
EMPTY WEIGHT: 1,450 lbs.  
MAX GROSS WEIGHT: 6,000 lbs.



4' x 8'  
EMPTY WEIGHT: 2,050 lbs.  
MAX GROSS WEIGHT: 12,000 lbs.



4' x 12'  
EMPTY WEIGHT: 2,500 lbs.  
MAX GROSS WEIGHT: 12,000 lbs.



4' x 16'  
EMPTY WEIGHT: 3,900 lbs.  
MAX GROSS WEIGHT: 12,000 lbs.



4' x 24'  
EMPTY WEIGHT: 4,400 lbs.  
MAX GROSS WEIGHT: 13,000 lbs.





# All MMECO Baskets Are Designed With 2.5 to 1 Safety Factor



6' x 12'  
EMPTY WEIGHT: 3,400 lbs.  
MAX GROSS WEIGHT: 23,800 lbs

6' x 16'  
EMPTY WEIGHT: 4,200 lbs.  
MAX GROSS WEIGHT: 24,800 lbs.



8' x 16'  
EMPTY WEIGHT: 6,000 lbs.  
MAX GROSS WEIGHT: 26,500 lbs.



8' x 8' Octagon  
EMPTY WEIGHT: 2,650 lbs.  
MAX GROSS WEIGHT: 12,500 lbs.



8' x 24'  
EMPTY WEIGHT: 8,600 lbs.  
MAX GROSS WEIGHT: 40,000 lbs.

**Designed With 2.5 to 1 Safety Factor**

## **MINI TRANSPORTER**

**DIMENSIONS 5'10" L x 5'10" W x 5' H • APPROX. WEIGHT 2,350 lbs.**



### **FEATURES:**

- Maximum Gross Weight: 10,000 lbs.
- Door Lock Pins with Positive Lock
- 2 - 4" Forklift Slots
- Stackable Design
- Internal Cargo Tie Down Rings
- Large Easy Open Door
- Drilled Padeyes
- Galvanized Coating
- Engineered Padeyes
- Designed with 2.5 to 1 Safety Factor

### **Common Uses:**

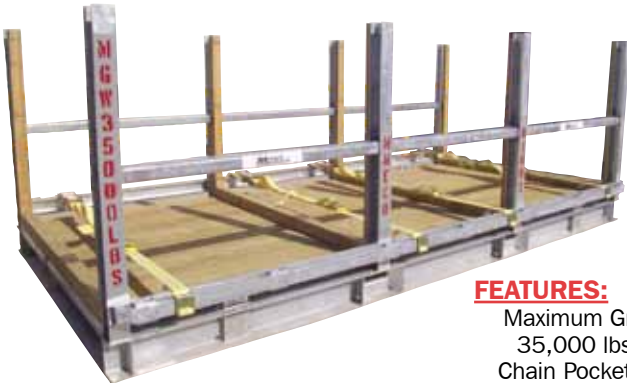
- Transport, contain, and safely lift up to four drums
- Transport, contain, and safely lift pallet material
- Transport, contain, and safely lift bulk sack material

## **TRANSPORTERS**

### **8' x 16' TRANSPORTER**

**DIMENSIONS: 16'L x 8'W x 5'8"H**

**EMPTY WEIGHT: 5,000 lbs.**



### **FEATURES:**

- Maximum Gross Weight: 35,000 lbs.
- Chain Pockets
- 4-3" Strap Binders
- 2-4" Forklift Slots
- Hardwood Deck
- Drilled Padeyes
- Galvanized Coating
- 4-Leg Sling
- Designed with 2.5 to 1 Safety Factor
- Engineered Padeyes

### **Common Uses:**

- Safely transport, contain, and lift odd configured materials such as tubing reels, pipe, spools of cable, etc.
- Safely transport, contain, and lift multiple items to reduce the number of crane lifts

### **8' x 24' TRANSPORTER**

**DIMENSIONS: 24'L x 8'W x 5'8"H**

**EMPTY WEIGHT: 6,500 lbs.**



### **FEATURES:**

- Maximum Gross Weight: 40,000 lbs.
- Chain Pockets
- 4-3" Strap Binders
- 2-4" Forklift Slots
- Hardwood Deck
- Drilled Padeyes
- Galvanized Coating
- 4-Leg Sling
- Designed with 2.5 to 1 Safety Factor
- Engineered Padeyes

### **Common Uses:**

- Safely transport, contain, and lift odd configured materials such as tubing reels, pipe, spools of cable, etc.
- Safely transport, contain, and lift multiple items to reduce the number of crane lifts

## **DRUM CARRIER**

**DIMENSIONS 3'10"H x 4'8"W x 5'1/2"D • EMPTY WEIGHT 1,400 lbs.**

**FEATURES:**

- Maximum Gross Weight: 6,000 lbs.
- 4 - Independent Lockable Doors
- Forklift Slots
- Stackable Design
- Safely Transports 4 - 55 Gallon Drums
- Engineered Padeyes



## **BOTTLE RACK**

**DIMENSIONS 6'5"H x 5'10"W x 5'1/2"D • EMPTY WEIGHT 2,000 lbs.**

**FEATURES:**

- Maximum Gross Weight: 3,800 lbs.
- Safely Transports 8 Oxygen Bottles and 2 Acetylene Bottles
- Fold Down Ramp to Ease Loading and Unloading
- 2" Ratchet Straps to Secure Bottles
- 4-Point Lift
- Engineered Padeyes



# MAGNUM MUD EQUIPMENT CO., INC.

*Small Portable Mixing Tanks Can Fit Anywhere*

## 30 BARREL DUAL ACTION HYDRAULIC MIXING PACKAGE

**TANK DIMENSIONS 14'L x 7'W x 9'7"H    APPROX. TANK WEIGHT 6,600 lbs.**

### PUMP AND ENGINE INFORMATION:

353 Detroit Diesel w/PTO and Hydraulic Power Pack  
Electric Start  
Drip Pan  
Emergency Shut Down  
3" x 4" Centrifugal Pump  
Muffler Wrap

### TANK INFORMATION:

2-4" Fill Lines  
1-4" Suction Line  
Stairway with Handrails  
Large Work Area  
Removable Handrails so Pallet can be Brought in from Two Sides  
14" Auger with Paddles  
4 Shear Breaks Located on Tank Walls  
Suction Valve Operable from Work Area



## 50 BARREL DUAL ACTION HYDRAULIC MIXING PACKAGE

**TANK DIMENSIONS 14'L x 8'W x 9'H    APPROX. TANK WEIGHT 8,000 lbs.**

### PUMP AND ENGINE INFORMATION:

371 Detroit Diesel w/PTO and Hydraulic Power Pack  
Electric Start  
Drip Pan  
Emergency Shut Down  
5" x 6" Centrifugal Pump  
Muffler Wrap

### TANK INFORMATION:

2-4" Fill Lines  
2-4" Suction Line  
Stairway with Handrails  
Fold Down Handrails on Top of Tank  
Large Work Area  
Removable Handrails so Pallet can be Brought in from Two Sides  
20" Auger with Paddles  
4 Shear Breaks Located on Tank Walls  
Suction Valve Operable from Work Area





# Compact Portable Open Top Tanks for Special Job Requirements

## 100 BARREL MIXING TANK

TANK DIMENSIONS 21'6" L x 8'4" W x 10'6" • APPROX. WEIGHT 10,500 lbs.



**FEATURES:**

- 4" Hopper
- 4" Manifold with 3-3" Jet Lines
- 4" Discharge and Fill Lines
- Stairway and Work Area with Safety Rails
- 3 HP Electric Agitator

## 100 BARREL OPEN TOP STORAGE TANK

TANK DIMENSIONS 16'6" L x 7'2" W x 7'4" H • APPROX. WEIGHT 6,000 lbs.



# MAGNUM MUD EQUIPMENT CO., INC.

*Tanks For Just About Everything*

## 200 BARREL OPEN TOP TANK

TANK DIMENSIONS 26'10" L x 8' W x 7' H • APPROX. WEIGHT 12,500 lbs.



## 200 BARREL OPEN TOP TANK WITH GAS BUSTER

TANK DIMENSIONS 28'6" L x 8' W x 7'6" H • APPROX. WEIGHT 16,000 lbs.





**“Mixing Tanks You Can Depend On”**

# 300 BARREL BLENDING PLANT WITH 2-10 HP ELECTRIC AGITATORS

TANK DIMENSIONS: 33'2" L x 8'2" W x 11'3" H • APPROX. WEIGHT 21,000

**FEATURES:**

- 4" Hopper
- Grated Top with Safety Rails
- 4" Fill Line
- 2 - 4" Suction Lines
- Wired 220V or 480V



# 500 BARREL MIXING PLANT WITH 2-15 HP ELECTRIC AGITATORS

TANK DIMENSIONS 41' L x 8'6" W x 12'10" H • APPROX. WEIGHT 30,000 lbs.

**FEATURES:**

- 4" Hopper
- Grated Top with Safety Rails
- 6" Fill Line
- 4" & 6" Suction Lines
- Wired 220V or 480V
- 2 Adjustable Gun Lines



# MAGNUM MUD EQUIPMENT CO., INC.

## Need Tanks for Acid Service?

### 210 BARREL (L SKID) STORAGE TANK

TANK DIMENSIONS 11'1"W x 10'2"D x 17'11"H • APPROX. WEIGHT 10,000 lbs.

**FEATURES:**

- 8" Pressure Relief Device
- 1 - 4" Fill Line
- 2 - 4" Suction Lines
- 1 - 4" Drain
- Large Cleanout Hatch



Usable in both horizontal and vertical positions

## CHEMICAL STORAGE TANKS

### 100 BARREL

TANK DIMENSIONS 8'4"L x 8'4"W x 14'H  
APPROX. WEIGHT 4,000 lbs.

### 150 BARREL

TANK DIMENSIONS 11'6"L x 9'6"W x 19'H  
APPROX. WEIGHT 6,650 lbs.



Steel skid built around tank makes it safer to transport on trucks and offshore

**FEATURES:**

- Durable High Density Crosslinked Polyethylene Construction for a Resistance to a Wide Range of Chemicals Used in Our Industry





## AIR DIAPHRAGM PUMPS

**2”**

**DIMENSIONS 30” H x 19”W x 14”L  
APPROX. WEIGHT 70± lbs.**



### MODEL M8

2” x 2” Air Diaphragm Pump  
125 Max PSI Max  
Up to 155 GPM  
Max. Particle Size 1/4”  
Suction Lift: Dry 20’ - Wet 25’

**3”**

**DIMENSIONS 33” H x 20”W x 17”L  
APPROX. WEIGHT 110± lbs.**

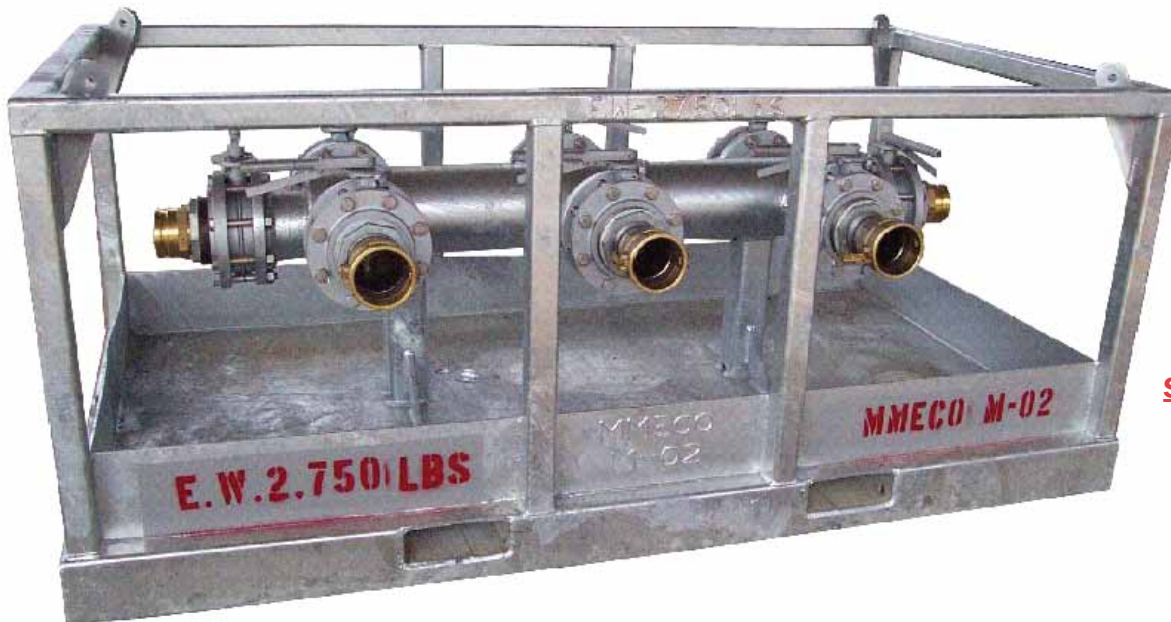


### MODEL M15

3” x 3” Air Diaphragm Pump  
125 PSI Max  
Up to 230 GPM  
Max. Particle Size 3/8”  
Suction Lift: Dry 17’ - Wet 25’

## 8 WAY MANIFOLD

**8’6” L X 4’ 6” W X 3’9” H**



### SPECIFICATIONS:

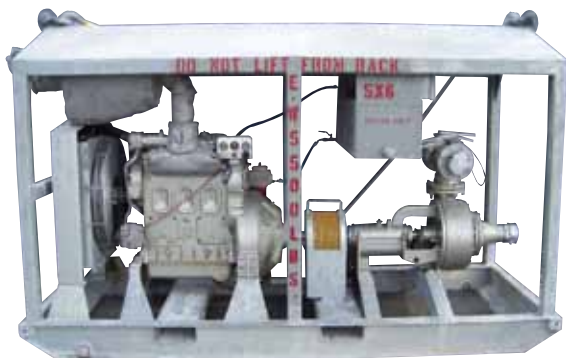
Empty Weight 2750 lbs.  
6” Valves  
Camlock Fittings  
Galvanized Finish  
Padeyes  
Forklift Slots  
Galvanized Drip Pan

# MAGNUM MUD EQUIPMENT CO., INC.

## Diesel Powered Centrifugal Pumps

### 5" X 6" CENTRIFUGAL PUMP WITH DIESEL POWER

SKID DIMENSIONS 10'L x 4'W x 6'9"H • APPROX. WEIGHT 5,500 lbs.



#### DETROIT DIESEL 371

- 3 Cylinder w/PTO
- Electric Start
- Drip Pan
- Emergency Shut Down
- Muffler Wrap
- Approx. GPM 1000

### 6" X 8" CENTRIFUGAL PUMP WITH DIESEL POWER

SKID DIMENSIONS 10'6"L x 4'W x 7'2"H • APPROX. WEIGHT 6,000 lbs.

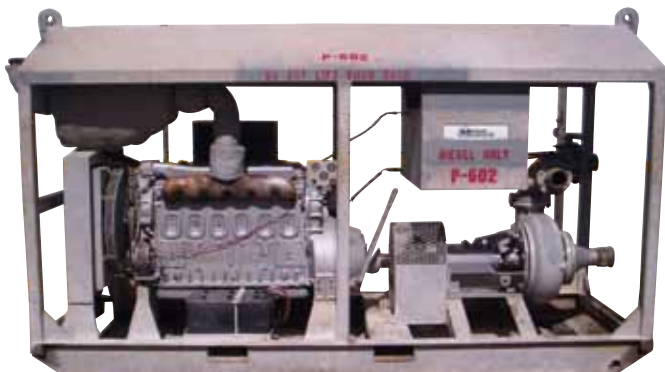


#### DETROIT DIESEL 471

- 4 Cylinder w/PTO
- Electric Start
- Drip Pan
- Emergency Shut Down
- Muffler Wrap
- Approx. GPM 1200

### 6" X 8" CENTRIFUGAL PUMP WITH DIESEL POWER

SKID DIMENSIONS 12'L x 4'W x 7'3"H • APPROX. WEIGHT 7,500 lbs.



#### DETROIT DIESEL 671

- 6 Cylinder w/PTO
- Electric Start
- Drip Pan
- Emergency Shut Down
- Muffler Wrap



# General Terms and Conditions

## WARRANTY AND RESPONSIBILITY

It is recognized that conditions in and about any well or work may involve hazards to life and property and obstacles to the functioning of products and the performance of services, and that such conditions are not and never have been subject to inspection or control by Magnum Mud Equipment Co., Inc.

1. Magnum Mud Equipment Co., Inc. warrants only that products, or parts therefor, sold or rented to customers shall be free from defects in materials and workmanship and not that they will accomplish any particular result. Liability under this warranty is limited to replacement of or credit for defective equipment or parts.
2. Services rendered by Magnum Mud Equipment Co., Inc. in connection with the rental or sale of its products consist only of technical advice as to make-up, inspection and operation or use. When any such services are rendered, customer will retain full custody, control and supervision of the work or the well and the conduct or operation thereof, and a representative of customer shall be present will full authority to direct operations.
3. Magnum Mud Equipment Co., Inc. will exert its best efforts to render other services offered by it as requested. No guarantee or representation is made as to results, and charges will be made regardless of results obtained. Magnum Mud Equipment Co., Inc. reserves the right to remove equipment and personnel from the well at any time, if in its opinion, conditions make such action advisable.
4. Customer will hold Magnum Mud Equipment Co., Inc. harmless from any and all liability or claim of liability to any person, firm or corporation for damage to person or property arising out of or in connection with the use of equipment sold or rented hereunder or the rendering of services hereunder, except for damage caused by the willful fault or gross negligence of Magnum Mud Equipment Co., Inc.
5. Magnum Mud Equipment Co., Inc. will hold customer harmless from all damage and from any liability to others for or in connection with damage caused by Magnum Mud Equipment Co., Inc.'s willful fault or gross negligence except in cases where concurrent or contributory fault of customer or customer's agents, servants, employees or contractors shall have contributed to such damage.
6. Magnum Mud Equipment Co., Inc. will hold customer harmless from any liability or injury to employees of Magnum Mud Equipment Co., Inc. except in cases where such injury results from the fault of customer or customer's agents, servants, employees or contractors.
7. Magnum Mud Equipment Co., Inc. will defend at its own cost and expense any suit charging patent infringement in the rental or use of any unaltered rented product and will pay judgement awarded by a court against customer as a result of any such suit, provided the customer is using the product in a manner prescribed by Magnum Mud Equipment Co., Inc. and notifies Magnum Mud Equipment Co., Inc. promptly of such suit and tenders the defence thereof to Magnum Mud Equipment Co., Inc.

8. Products not sold to customer will remain the property of Magnum Mud Equipment Co., Inc. and are not to be repaired or modified without Magnum Mud Equipment Co., Inc.'s consent. If lost or damaged beyond ordinary wear and tear, such products will be charged for as provided in Magnum Mud Equipment Co., Inc.'s current schedule. Any equipment belonging to Magnum Mud Equipment Co., Inc. in customer's possession may be repossessed by Magnum Mud Equipment Co., Inc. upon sixty (60) days notice.

9. All of the preceding terms and conditions shall apply between Magnum Mud Equipment Co., Inc. or any affiliate of Magnum Mud Equipment Co., Inc. and any service company operator, or other party or parties, selling, renting or using Magnum Mud Equipment Co., Inc. products, parts thereof, or services furnished hereunder.

10. The entire liability of Magnum Mud Equipment Co., Inc. including express and implied warranties in connection with its products or services is set forth above, and no one is authorized to waive or amend the same in any particular.

11. Prices, rates or terms are subject to change without notice. Equipment owned by others will be sold, rented or used by Magnum Mud Equipment Co., Inc. under these terms and conditions except where inconsistent with the manufacturer's terms and conditions, when the latter shall prevail.

**TERMS OF PAYMENT** 30 Days Net. Interest chargeable thereafter.

**TAXES AND OTHER CHARGES** Any tax based on or measured by the charges or collections for the sale or rental of products or the rendering of services, import duties, documentation charges, freight charges and transfer fees shall be added to the stated price.

**CANCELLATION AND RETURNS** Orders for products of special design, size or materials are not cancellable after receipt. Special prices will be charged for altered equipment or products made to customer specifications. Credit will not be allowed for products returned without prior written authority.

**CHANGE OF DESIGN** We reserve the right to change or modify the design of any Magnum Mud Equipment Co., Inc. products without obligation to furnish or install such changes or modifications on products previously or subsequently sold.

**RENTAL OF EQUIPMENT** Rental charges commence when equipment leaves Magnum Mud Equipment Co., Inc. service base point and continues until returned thereto. If equipment is shipped by carrier to or from lease location, cost of freight will be charged back to customer at Magnum Mud Equipment Co., Inc.'s cost. Costs of restoring rented equipment to first class condition after use will be charged to customer including cleaning of tanks and disposal of any materials left inside of tanks when returned from rental.

## SPECIAL PROVISIONS

1. There is a five (5) day minimum rent on most rental equipment.
2. Installation and maintenance of rental equipment and liability for equipment will be lessee responsibility.
3. Service Charges:
  - MMECO Supervisor \$55.00 per hour per man
  - MMECO Service Personnel \$45.00 per hour per man
  - Mileage \$.75 per mile
  - Food and Lodging Cost plus 15%
  - Third Party Charges at Cost plus 15%

4. Cleaning and Disposal charges for tanks coming in from rental with solids or liquids left in them:
 

Supervisor .....	\$55.00 per hour
Labor (1 Service Man) .....	\$35.00 per hour
Pressure Washer - 2000 PSI .....	\$10.00 per hour
Transfer Pump.....	\$10.00 per hour
Vacuum Tank .....	\$40.00 per hour
Vacuum Truck .....	On Request
Disposal Water Base.....	On Request
Disposal Oil Base .....	On Request

5. Prices published F.O.B. Houma, Louisiana shop and F.O.B. Jennings, Louisiana.

Prices are subject to change without notice.

# 24 HOUR SERVICE

# MIMMECO

## SETTING THE STANDARDS



## 24 HOUR SERVICE

**CORPORATE OFFICE:**  
1961 Highway 182  
Houma, Louisiana 70364  
Phone: 985 872-1755  
Fax: 985 872-1786  
1-800-230-TANK

**Jennings, Louisiana**  
1923 Highway 90 West  
Phone: 337 824-8890  
Fax: 337 824-8892  
1-800-200-TANK

**Fourchon, Louisiana**  
1-800-230-8265

**Intracoastal City, Louisiana**  
1-800-200-8265

**Venice, Louisiana**  
1-800-230-8265

**Morgan City, Louisiana**  
1-800-230-8265

**Cameron, Louisiana**  
1-800-200-8265

**Galveston, Texas**  
1-800-200-8265

Visit Our Website at [www.magnummud.com](http://www.magnummud.com)